



October 1996

EMBARGOED UNTIL 11:30 AM FRI 11 OCTOBER 1996

# Tasmanian Statistical Indicators

ABS Catalogue No. 1303.6



**TASMANIAN STATISTICAL INDICATORS  
OCTOBER 1996**

**Denis W. Rogers  
Regional Director, Tasmania**



## CONTENTS

	Page
MAIN FEATURES	v
TABLES	
<b>1</b> Population	1
<b>2</b> Births, deaths and marriages registered	1
<b>3</b> Labour force status	2
<b>4</b> Labour force status by region, males	3
<b>5</b> Labour force status by region, females	4
<b>6</b> Labour force status by region, persons	5
<b>7</b> Teenage labour market	6
<b>8</b> All employed persons by occupation	7
<b>9</b> Employed wage and salary earners, sector and industry	8
<b>10</b> Average hours worked	8
<b>11</b> Job vacancies	9
<b>12</b> Industrial disputes	9
<b>13</b> Average weekly earnings of employees	10
<b>14</b> Weekly award rates of pay indexes, full-time adult employees	10
<b>15</b> Summary of annual movements in wages and prices	11
<b>16</b> House price index numbers, Hobart	11
<b>17</b> Consumer price index, Hobart and eight capital cities combined	12
<b>18</b> Price index of materials used in building other than house building, Hobart	13, 14
<b>19</b> Miscellaneous indicators of production (production of selected commodities)	15
<b>20</b> Livestock slaughtering,	16
<b>21</b> Livestock slaughtering	16
<b>22</b> Meat production	17
<b>23</b> Principal mineral concentrates produced	17
<b>24</b> Sawmills and plywood mills, logs delivered and timber produced	18
<b>25</b> Chipping and grinding of wood	18
<b>26</b> Logs delivered for milling or chipping	19
<b>27</b> Building approvals	20

### INQUIRIES

- *for further information about statistics in this publication and the availability of related unpublished statistics, contact the Hobart office of the ABS on (03) 6220 5800.*
- *for information about other ABS statistics and services, please refer to the back cover of this publication.*

	Page
<b>28</b> Dwelling commencements	20
<b>29</b> Banking statistics	21
<b>30</b> Private new capital expenditure by type of asset	21
<b>31</b> Passenger arrivals and departures, Tasmania	22
<b>32</b> Total passenger arrivals by air and sea, Tasmania	22
<b>33</b> Accommodation statistics	23
<b>34</b> Registrations of new motor vehicles	24
<b>35</b> Turnover of retail establishments at current prices	24
<b>36</b> Major Statistical Indicators—Australia and State comparisons	25
 EXPLANATORY NOTES	 26

## MAIN FEATURES

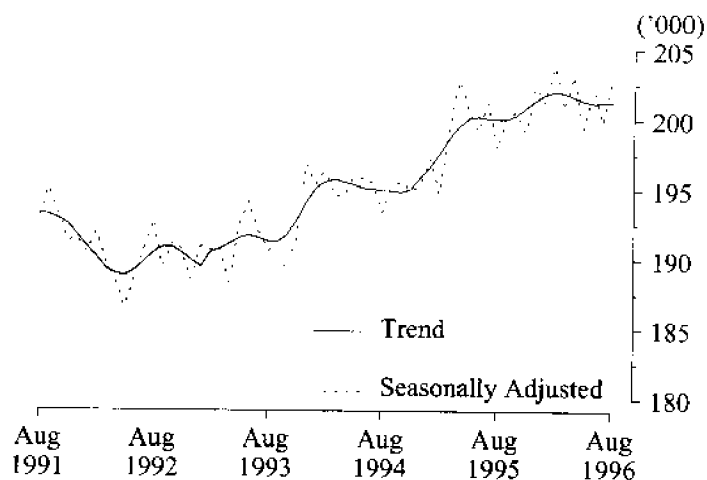
### EMPLOYMENT

State comparisons  
trend estimates

The Australian and State *trend series* comparisons are given on page 25. There was an increase of 0.7% in Tasmania's employment over the year to August 1996. The largest increase in employment was in Queensland (1.9%). Next followed Western Australia (1.6%), Victoria (1.4%), South Australia (0.8%), and New South Wales (0.6%).

Source: *Labour Force, Australia, Preliminary*, ABS catalogue no. 6202.0.

### EMPLOYMENT, TASMANIA



Regional comparisons  
original terms

In the Hobart and Southern Statistical Divisions the estimate of employment in *original* terms was 98,900 in June 1996, compared with 101,700 in June 1995. The estimate of employment in the Northern Statistical Division was 58,000 in June 1996, compared with 54,200 in June 1995. The estimate of employment in the Mersey-Lyell Statistical Division was 44,300 in June 1996, compared with 42,600 in June 1995. (See tables 3-8, pages 2-7.)

### THE LABOUR FORCE

Trend estimates

There were an estimated 225,300 persons (based on *trend* estimates) in the labour force in August 1996, and an estimated 368,800 civilian Tasmanians aged 15 or more, yielding a labour force participation rate of 61.1%, compared with 60.1% in August 1995.

For males, the *trend* estimate of the participation rate was 72.1%, compared with 70.1% for August 1995. For females, the *trend* estimate of the participation rate was 50.4%, compared with 50.5% in August 1995.

Source: *Labour Force, Australia, Preliminary*, ABS catalogue no. 6202.0.

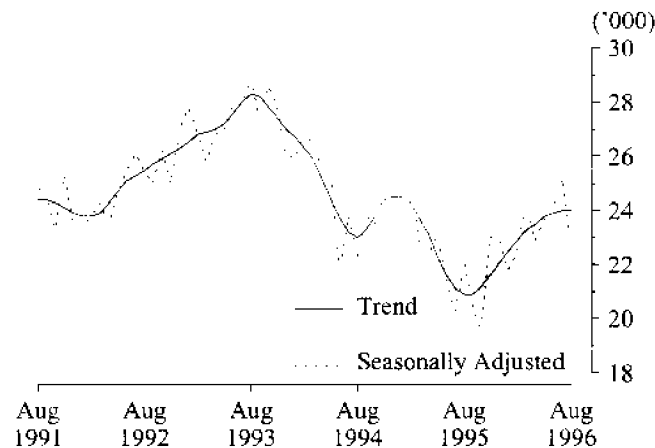
## UNEMPLOYMENT

Trend estimates

The Tasmanian *trend* estimate of 24,000 unemployed persons in August 1996 was an increase of 3,100 on the figure for August 1995. The *trend* estimate of the unemployment rate was 10.6% in August 1996, compared with 9.5% in August 1995.

Source: *Labour Force, Australia, Preliminary*, ABS catalogue no. 6202.0.

### UNEMPLOYMENT, TASMANIA



## EMPLOYED WAGE AND SALARY EARNERS

Original terms

In *original* terms, there were approximately 137,600 employed wage and salary earners in Tasmania in March 1995. In March 1993 the figure was 147,100 employed wage and salary earners.

In *original* terms, the Tasmanian public sector accounted for 31.7% of all employed wage and salary earners in February 1995. Overall, the category Community services had the highest industry representation — 27.8% — compared with the equivalent figure of 24.9% recorded in February 1993. The next highest industry grouping was Wholesale trade and Retail trade (19.4%, compared with 20.8% in February 1993) and Manufacturing (15.2%, compared with 14.8% in February 1993).

In *original* terms, women made up 45.5% of employed wage and salary earners in February 1995. In February 1993, the equivalent figure was 44.8%.

Source: *Employed Wage and Salary Earners, Australia*, ABS catalogue no. 6248.0.

## AWARD RATES OF PAY INDEXES

Original terms

The annual movements from July 1995 to July 1996 of weekly award rates of pay indexes for Tasmania were 0.5% for full-time adult females and 1.0% for full-time adult males, for a combined annual increase of 0.9%. For Australia, the figures were 1.0% for females and 1.0% for males, for a combined annual increase of 1.0%.



For full-time adult female employees in Tasmania, the largest industry increases over this 12-month period occurred in the Public administration and defence industry (1.8%); and the Manufacturing industry (1.4%).

For the same period for full-time adult male employees in Tasmania, the largest industry increases occurred in the Transport and storage industry (3.0%); and the Manufacturing industry (1.7%).

The largest occupation increase over the same period for full-time adult female employees occurred in Tradespersons (1.6%); and Plant and machine operators, and drivers (1.1%).

For full-time adult male employees the largest occupation increases over the same period occurred in Plant and machine operators, and drivers (2.0%); and Clerks (1.1%).

Source: *Award Rates of Pay Indexes, Australia*, ABS catalogue no. 6312.0.

#### BUILDING MATERIALS PRICE INDEXES

Original terms The price index for house building materials in Hobart decreased by 0.1% for the twelve months ending July 1996, compared with increases of 5.2% for the twelve months ending July 1995, and 1.8% for the equivalent period in 1993.

For materials used in other than house building, the price index in Hobart rose by 1.0% for the year ending July 1996, compared with 3.5% for 1995, and 1.8% in 1993.

Building components which registered the highest change in Hobart over the year to July were paint and other coatings (up 8.4%) and clay bricks (up 5.4%). A fall of 8.3% was recorded in the price index for structural timber over the year to July 1996, and prices for non-ferrous pipes and fittings fell by 8.8% over the same period.

Sources: *Price Index of Materials Used in House Building*, July 1996, ABS catalogue no. 6408.0, *Price Index of Materials Used in Other Than House Building*, July 1996, ABS catalogue no. 6407.0.

#### LIVESTOCK SLAUGHTERING

Trend estimates The July 1996 Tasmanian *trend* estimate for the slaughtering of cattle and calves was 1.5% higher than that recorded in June 1996. The number of sheep and lambs slaughtered increased by 1.0%, while the number of pigs slaughtered decreased by 0.8%.

The *trend* estimate of the number of cattle and calves slaughtered was 19,413, which is 3.6% below the 20,129 slaughtered in July 1995.

The *trend* estimate for the slaughtering of sheep and lambs was 64,237 in July 1996, 8.3% below the 70,083 slaughtered in July 1995, and well below the estimate of 99,472 slaughtered in July 1994.

The *trend* estimate of 6,449 pigs slaughtered in July 1996 was 12.2% below the 7,345 slaughtered in July 1995. This was the seventh successive month of decline in the number of pigs slaughtered in Tasmania.

(See table 21, page 16.)

## BUILDING APPROVALS

Original terms There were 121 new dwelling units approved during July 1996 in Tasmania. This was a decrease of 37.6 % on the number recorded for June 1996 (194) and a 43.2 % decrease on the number recorded for July 1995 (213).

For the twelve months ended July 1996 there were 2 447 new dwelling units approved, 20.4 % below the 3 076 units recorded for the twelve months ended July 1995.

The value of all building approved, at current prices, in July 1996 was \$50.0 million, 59.9 % above the June 1996 figure of \$31.3 million and 70.6 % above the July 1995 figure of \$29.3 million.

(See table 27, page 20.)

## GROSS STATE PRODUCT

Trend estimates Tasmanian Gross State Product grew 0.8% in the June quarter, as measured by the *trend* series at current prices. Tasmanian growth was below the national *trend*, with Australian Gross Domestic Product growing 1.4% during the June quarter. Western Australia recorded the highest quarterly growth with 2.0%, while Tasmania and South Australia recorded the lowest with 0.8%.

Tasmania's annual increase in Gross State Product (June 1995 to June 1996) as measured by the *trend* series at current prices was 4.6%. Tasmanian annual Gross State Product growth was below the national *trend*, with Australian Gross Domestic Product growing 6.8% during the same period. Western Australia experienced the largest annual increase of 10.2%, while Tasmania and the Northern Territory experienced the lowest of 4.6%.

Sources: *Australian National Accounts, State Accounts*, June quarter 1996, ABS catalogue no. 5242.0, *National Income, Expenditure and Product, Australian National Accounts*, June quarter 1996, ABS catalogue no. 5206.0.

## PRIVATE NEW CAPITAL EXPENDITURE

Original terms Total new capital expenditure in Tasmania, for the June quarter 1996 was \$154 million. This was 10.0 % above the \$140 million recorded in the March quarter 1996 but 27.0 % below the June quarter 1995 figure of \$211 million.

The total new capital expenditure in Tasmania in 1995-96 was \$580 million, 8.8 % below the \$636 million recorded in 1994-95.

(See table 30, page 21.)

## SURVEY OF TOURIST ACCOMMODATION

Original terms The room occupancy rate in hotels, motels and guest houses in Tasmania decreased from 48.4% in June quarter 1995 to 46.7% in June quarter 1996. During the same period the number of rooms available increased by 2.1%, from 5,408 to 5,523.

Accommodation takings for hotels, motels and guest houses in Tasmania recorded a decrease of 0.8% from \$18.0 million in June quarter 1995 to \$17.8 million in June quarter 1996.

The unit occupancy rate for holiday units decreased slightly from 43.6% in June quarter 1995 to 43.3% in June quarter 1996 while units available increased by 1.9% over the same period. Takings from accommodation were virtually unchanged in the same period.

Caravan park sites and cabins available decreased by 2.2% from 6,625 in June quarter 1995 to 6,479 in June quarter 1996. Site occupancy rate increased from 30.3% in June quarter 1995 to 30.5% in June quarter 1996 and takings increased from \$1.5 million to \$1.6 million in the same period.

(See table 33, page 23.)

#### NEW MOTOR VEHICLE REGISTRATIONS

Original terms There were 1,341 new motor vehicles (excluding motorcycles) registered in Tasmania during July 1996. This was 34.9% above the 994 registered in June 1996 and 30.3% above the figure for July 1995 (1,029).

The increase in July 1996 was due to the registration of 355 more passenger vehicles than in the previous month. Passenger rental vehicles accounted for 227 of these registrations.

(See table 34, page 24.)

#### RETAIL

Trend estimates The *trend* estimate of turnover for July 1996, for Australia (\$10,304.2 million), was 5.2 % higher than for July 1995 (\$9,793.0 million). The *trend* estimate of retail turnover increased by 0.4 % between June 1996 and July 1996.

Source: *Retail Trade Australia*, ABS catalogue no. 8501.0.

The *trend* estimate for turnover of retail and selected service establishments for July 1996, in Tasmania, was \$248.1 million, an increase of 4.7 % on the July 1995 figure of \$237.0 million.

Original terms In *original* terms, the estimate of retail turnover in July 1996, for Tasmania, was \$235.7 million, 4.6 % above the figure recorded for July 1995 (\$225.3 million).  
(See table 35, page 24.)



# 1

## POPULATION: Original

Year or quarter	Estimated resident population at end of period	Natural increase <sup>1</sup>	Net estimated migration gain	Total population growth	Annual growth rate <sup>2</sup>
	'000	'000	'000	'000	%
<b>Year ended 30 June</b>					
1992	469.7	3.2	- 0.3	2.9	0.62
1993	471.4	3.1	- 1.5	1.7	0.35
1994	472.5	3.1	- 2.0	1.1	0.24
1995 p	473.0	2.9	- 2.4	0.5	0.11
<b>Quarter</b>					
<b>1994</b>					
December	472.8	0.8	- 0.8	0.0	0.14
<b>1995</b>					
March	473.0	0.8	- 0.6	0.2	0.17
June	473.0	0.7	- 0.7	0.0	0.11
September p	473.2	0.7	- 0.5	0.2	0.09
December p	473.2	0.5	- 0.6	- 0.1	0.07
<b>1996</b>					
March p	473.2	0.8	- 0.7	0.1	0.04

<sup>1</sup> Excess of live births registered over deaths registered (based on usual State of residence).  
<sup>2</sup> Percentage growth from same quarter in previous year.  
 (Source: Australian Demographic Statistics, ABS catalogue number 3101.0)

# 2

## BIRTHS, DEATHS AND MARRIAGES REGISTERED: Original

Year or quarter	Births		Deaths		Infant mortality <sup>1</sup>		Marriages	
	No.	Rate <sup>2</sup>	No.	Rate <sup>2</sup>	Deaths	Rate <sup>3</sup>	No.	Rate <sup>2</sup>
<b>Year ended 31 December</b>								
1991	6 857	14.7	3 664	7.9	61	8.9	3 069	6.6
1992	6 956	14.8	3 722	7.9	43	6.2	3 081	6.6
1993	6 804	14.4	3 618	7.7	37	5.4	3 055	6.5
1994	6 836	14.5	3 909	8.3	46	6.7	2 887	6.1
1995	6 558	13.9	3 739	7.9	36	5.5	2 840	6.0
<b>Quarter</b>								
<b>1994</b>								
December	1 702	..	883	..	9	5.3	768	..
<b>1995</b>								
March p	1 804	..	897	..	8	4.4	1 067	..
June p	1 611	..	954	..	10	6.2	667	..
September p	1 697	..	982	..	9	5.3	307	..
December p	1 446	..	906	..	9	6.2	799	..
<b>1996</b>								
March p	1 748	..	979	..	10	5.7	856	..

<sup>1</sup> Registered deaths of children under one year of age.  
<sup>2</sup> Rate per 1,000 of estimated mean population.  
<sup>3</sup> Rate per 1,000 live births.  
 (Source: Australian Demographic Statistics, ABS catalogue number 3101.0)

## 3

LABOUR FORCE STATUS<sup>1</sup>: Seasonally adjusted and trend

Month	Seasonally adjusted series				Trend Series			
	Employed '000	Unemployed '000	Unemploy- ment rate %	Participation rate %	Employed '000	Unemployed '000	Unemploy- ment rate %	Participation rate %
<b>MALES</b>								
<b>1995</b>								
August	112.6	14.4	11.3	70.3	113.1	13.4	10.6	70.1
September	112.9	13.4	10.6	69.9	112.9	13.2	10.5	69.8
October	113.2	11.7	9.3	69.1	113.0	13.2	10.5	69.9
November	112.8	13.6	10.8	70.0	113.5	13.4	10.6	70.2
December	113.8	14.7	11.4	71.0	114.1	13.8	10.8	70.7
<b>1996</b>								
January	114.7	14.0	10.9	71.1	114.9	14.1	11.0	71.3
February	117.0	14.0	10.7	72.4	115.4	14.5	11.2	71.8
March	115.5	15.0	11.5	72.1	115.7	14.9	11.4	72.1
April	116.3	15.3	11.6	72.6	115.7	15.0	11.5	72.2
May	114.5	15.0	11.6	71.5	115.7	15.1	11.5	72.2
June	116.2	15.2	11.6	72.5	115.8	15.0	11.5	72.2
July	114.9	15.5	11.9	71.9	115.9	14.9	11.4	72.2
August	117.5	13.7	10.5	72.4	116.0	14.8	11.3	72.1
<b>FEMALES</b>								
<b>1995</b>								
August	86.2	7.7	8.2	50.3	86.8	7.5	7.9	50.5
September	87.5	7.1	7.5	50.7	87.1	7.7	8.1	50.7
October	87.9	7.9	8.2	51.2	87.3	8.0	8.4	51.0
November	86.7	9.4	9.8	51.4	87.4	8.2	8.6	51.1
December	88.2	8.2	8.5	51.5	87.3	8.4	8.7	51.1
<b>1996</b>								
January	86.5	7.8	8.2	50.4	87.0	8.4	8.8	51.0
February	86.9	8.4	8.9	50.9	86.6	8.4	8.8	50.7
March	85.3	9.1	9.7	50.4	86.2	8.4	8.9	50.5
April	87.0	7.6	8.0	50.5	85.9	8.5	9.0	50.4
May	84.6	8.7	9.3	49.8	85.6	8.7	9.2	50.4
June	86.0	8.9	9.3	50.6	85.5	8.9	9.4	50.4
July	85.0	9.7	10.3	50.5	85.4	9.1	9.6	50.4
August	85.5	9.0	9.5	50.4	85.2	9.2	9.7	50.4
<b>TOTAL</b>								
<b>1995</b>								
August	198.8	22.1	10.0	60.1	200.0	20.9	9.5	60.1
September	200.4	20.5	9.3	60.1	200.0	20.9	9.5	60.1
October	201.0	19.5	8.9	60.0	200.3	21.2	9.6	60.3
November	199.6	23.0	10.3	60.5	200.9	21.6	9.7	60.5
December	201.9	22.9	10.2	61.1	201.4	22.1	9.9	60.8
<b>1996</b>								
January	201.2	21.8	9.8	60.6	201.8	22.5	10.0	61.0
February	203.9	22.5	9.9	61.5	202.0	22.9	10.2	61.1
March	200.8	24.2	10.7	61.1	201.9	23.3	10.3	61.1
April	203.2	22.9	10.1	61.4	201.6	23.5	10.4	61.1
May	199.2	23.7	10.6	60.5	201.4	23.8	10.6	61.1
June	202.2	24.1	10.6	61.4	201.2	23.9	10.6	61.1
July	199.8	25.2	11.2	61.1	201.3	24.0	10.7	61.1
August	203.0	22.7	10.0	61.2	201.3	24.0	10.6	61.1

<sup>1</sup> For explanation of terms and concepts, refer to *Labour Force, Australia*, ABS catalogue number 6203.0.  
(Source: *Labour Force Australia*, ABS catalogue number 6203.0)

# 4

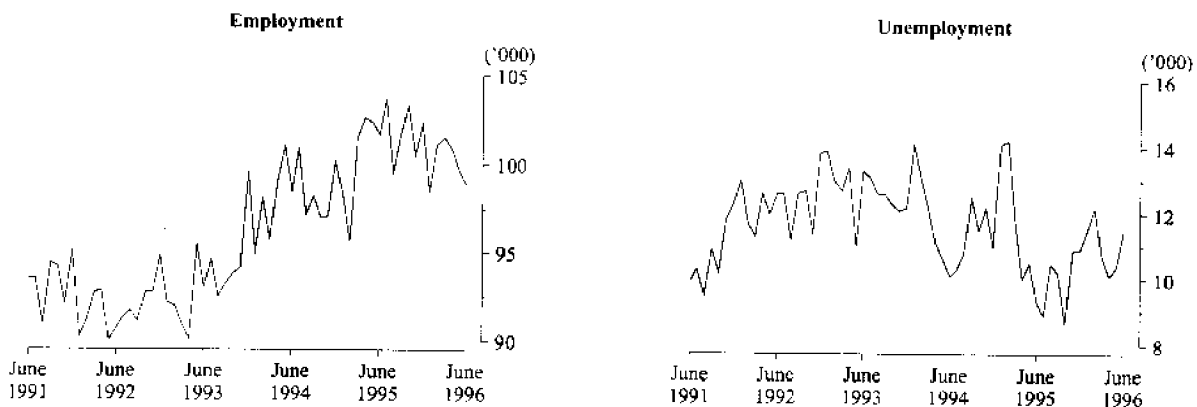
## LABOUR FORCE STATUS BY REGION, MALES<sup>1, 2</sup>: Original

Month		Total employed '000	Total unemployed '000	Unemployment rate %	Participation rate %
HOBART AND SOUTHERN STATISTICAL DIVISIONS					
1993	June	51.8	7.7	12.9	67.8
1995	June	56.5	6.6	10.4	71.2
1996	April	56.6	6.6	10.5	70.8
	May	56.0	6.7	10.6	70.0
	June	55.6	7.4	11.8	71.0
NORTHERN STATISTICAL DIVISION					
1993	June	31.9	5.1	13.8	73.8
1995	June	31.9	4.2	11.7	71.6
1996	April	32.2	4.6	12.4	73.6
	May	32.3	3.9	10.8	72.3
	June	33.2	4.3	11.3	74.3
MERSEY-LYELL STATISTICAL DIVISION					
1993	June	25.1	5.0	16.7	74.8
1995	June	24.3	3.6	12.9	67.5
1996	April	27.3	3.0	9.8	72.2
	May	26.6	3.5	11.5	72.5
	June	26.6	3.5	11.6	71.8
TASMANIA					
1993	June	108.8	17.8	14.1	71.1
1995	June	112.8	14.4	11.3	70.5
1996	April	116.1	14.2	10.9	71.9
	May	115.0	14.0	10.9	71.2
	June	115.4	15.2	11.6	72.1

<sup>1</sup> For explanation of terms and concepts, refer to *Labour Force, Australia*, ABS catalogue number 6203.0.

<sup>2</sup> Data in this table are original series, i.e. they are not part of a seasonally adjusted or a trend series. Accordingly, care should be exercised when using these data. New monthly data from each quarter (March, June, September and December) are published two months after the quarter. (Source: Labour Force Estimates—microfiche tables.)

### Hobart and Southern Statistical Divisions—Persons: Original



# 5

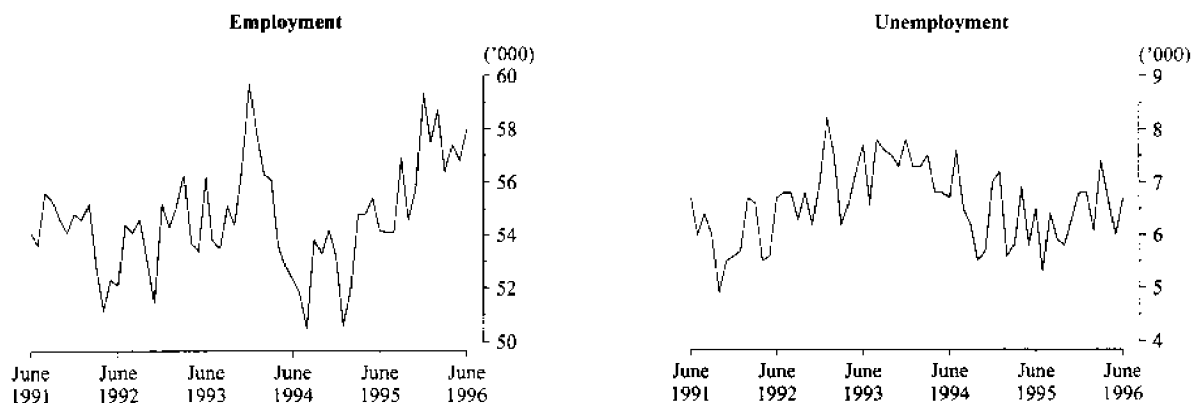
## LABOUR FORCE STATUS BY REGION, FEMALES<sup>1,2</sup>: Original

Month		Total employed '000	Total unemployed '000	Unemployment rate %	Participation rate %
<b>HOBART AND SOUTHERN STATISTICAL DIVISIONS</b>					
1993	June	41.2	5.6	11.9	51.7
1995	June	45.1	2.7	5.6	51.6
1996	April	44.3	3.5	7.3	50.9
	May	43.7	3.7	7.9	51.0
	June	43.3	4.1	8.6	51.3
<b>NORTHERN STATISTICAL DIVISION</b>					
1993	June	24.2	2.5	9.5	49.6
1995	June	22.3	2.2	9.2	46.7
1996	April	25.2	2.1	7.8	53.0
	May	24.5	2.2	8.1	51.8
	June	24.8	2.4	8.9	52.2
<b>MERSEY-LYELL STATISTICAL DIVISION</b>					
1993	June	16.8	2.5	12.9	49.4
1995	June	18.2	1.8	9.1	48.3
1996	April	17.2	2.1	10.7	46.00
	May	17.8	2.3	11.5	46.91
	June	17.7	2.1	10.4	46.26
<b>TASMANIA</b>					
1993	June	82.3	10.6	11.4	50.6
1995	June	85.6	6.7	7.3	49.5
1996	April	86.7	7.7	8.1	50.4
	May	86.0	8.2	8.7	50.3
	June	85.8	8.5	9.1	50.4

<sup>1</sup> For explanation of terms and concepts, refer to *Labour Force, Australia*, ABS catalogue number 6203.0.

<sup>2</sup> Data in this table are original series, i.e. they are not part of a seasonally adjusted or a trend series. Accordingly, care should be exercised when using these data. New monthly data from each quarter (March, June, September and December) are published two months after the quarter. (Source: Labour Force Estimates--microfiche tables.)

### Northern Statistical Division—Persons: Original





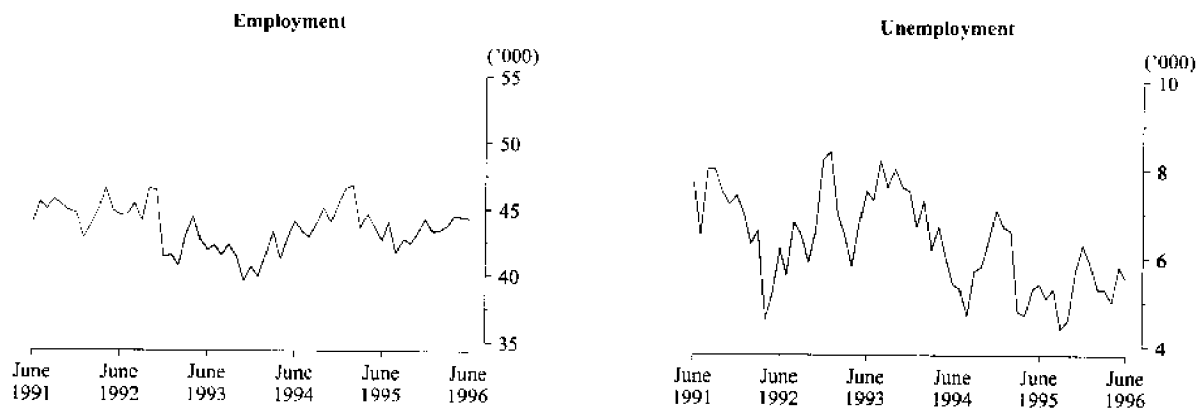
## 6

LABOUR FORCE STATUS BY REGION, PERSONS<sup>1, 2</sup>: **Original**

Month		Total employed	Total unemployed	Unemployment rate	Participation rate
		'000	'000	%	%
<b>HOBART AND SOUTHERN STATISTICAL DIVISIONS</b>					
1993	June	93.0	13.3	12.5	59.6
1995	June	101.7	9.3	8.3	61.2
1996	April	100.9	10.1	9.1	60.6
	May	99.7	10.4	9.4	60.3
	June	98.9	11.5	10.4	60.9
<b>NORTHERN STATISTICAL DIVISION</b>					
1993	June	56.2	7.7	12.0	61.2
1995	June	54.2	6.5	10.7	60.2
1996	April	57.4	6.7	10.5	63.2
	May	56.8	6.0	9.6	61.9
	June	58.0	6.7	10.3	63.0
<b>MERSEY-LYELL STATISTICAL DIVISION</b>					
1993	June	41.9	7.5	15.2	62.3
1995	June	42.6	5.4	11.3	57.8
1996	April	44.5	5.0	10.1	59.1
	May	44.4	5.8	11.5	59.5
	June	44.3	5.5	11.1	58.9
<b>TASMANIA</b>					
1993	June	191.1	28.5	13.0	60.7
1995	June	198.4	21.1	9.6	59.8
1996	April	202.7	21.9	9.7	61.0
	May	200.9	22.2	10.0	60.6
	June	201.2	23.7	10.5	61.1

<sup>1</sup> For explanation of terms and concepts, refer to *Labour Force, Australia*, ABS catalogue number 6203.0.

<sup>2</sup> Data in this table are original series, i.e. they are not part of a seasonally adjusted or a trend series. Accordingly, care should be exercised when using these data. New monthly data from each quarter (March, June, September and December) are published two months after the quarter. (Source: Labour Force Estimates—microfiche tables.)

Mersey-Lyell Statistical Division—Persons: **Original**

## 7

TEENAGE LABOUR MARKET<sup>1, 2</sup>: Original

Month	Employed		Unemployed		Labour force	Not in labour force	Civilian population aged 15-19	Unemployment rate	Unemployment population ratio	Participation rate
	Full-time	Total	Looking for full-time work	Total						
	'000	'000	'000	'000	'000	'000	'000	%	%	%
ATTENDING NEITHER SCHOOL NOR A TERTIARY INSTITUTION FULL TIME										
1993 August	6.3	8.1	3.5	3.6	11.7	2.0	13.7	30.9	26.3	85.3
1995 August	6.1	8.3	2.4	2.4	10.8	1.1	11.9	22.7	20.2	90.9
1996 June	7.0	9.3	2.7	2.7	12.0	1.3	13.3	22.7	20.3	90.6
July	6.6	8.7	3.0	3.0	11.6	1.5	13.1	25.7	22.9	88.9
August	6.4	8.3	1.8	2.1	10.4	1.5	11.9	19.8	17.6	87.4
ATTENDING SCHOOL OR A TERTIARY INSTITUTION FULL TIME										
1993 August	..	4.2	0.8	1.7	5.9	14.9	20.8	28.8	8.2	28.4
1995 August	..	4.9	0.4	1.5	6.4	15.7	22.1	23.4	6.8	29.0
1996 June	0.3	6.9	0.2	1.2	8.1	12.6	20.8	14.8	5.8	38.9
July	0.1	6.5	..	1.3	7.8	13.2	21.0	16.7	6.2	37.1
August	0.2	6.1	0.4	1.5	7.7	14.6	22.2	19.5	6.8	34.7
TOTAL										
1993 August	6.3	12.3	4.2	5.3	17.6	16.9	34.6	30.0	15.3	51.0
1995 August	6.1	13.3	2.9	4.0	17.2	16.8	34.0	23.0	11.8	50.7
1996 June	7.3	16.2	2.9	4.0	20.2	13.9	34.1	19.6	11.7	59.2
July	6.7	15.2	3.0	4.3	19.5	14.6	34.1	22.0	12.6	57.1
August	6.6	14.5	2.2	3.6	18.1	16.1	34.1	19.8	10.6	52.9

<sup>1</sup> Persons aged 15-19 years.

<sup>2</sup> For explanation of terms and concepts, refer to *Labour Force, Australia*, ABS catalogue number 6203.0.  
(Source: Labour Force Estimates—microfiche tables.)

## 8

ALL EMPLOYED PERSONS BY OCCUPATION<sup>1</sup>: Original

Occupation	May 1995		May 1996		Proportion of total employed	
	Persons	Males	Females	Persons	May 1995	May 1996
	'000	'000	'000	'000	%	%
<b>Managers and administrators</b>	19.0	13.6	3.4	17.0	9.4	8.5
Farmers and farm managers	6.5	4.0	0.9	4.9	3.2	2.4
Managing supervisors	6.9	6.5	1.5	8.0	3.4	4.0
Other	5.6	3.1	1.2	4.1	2.8	2.0
<b>Professionals</b>	25.1	12.8	10.7	23.5	12.5	11.7
Building and professional engineers	2.4	1.6	—	1.6	1.2	0.8
Health diagnosis and treatment practitioners	3.0	1.3	1.5	2.8	1.5	1.4
School teachers	8.5	1.4	3.7	5.1	4.2	2.5
Business professionals	3.7	3.8	1.4	5.2	1.9	2.6
Other	7.4	4.7	4.1	8.8	3.7	4.4
<b>Para-professionals</b>	14.3	7.3	5.8	13.1	7.1	6.5
Engineering and building associates and technicians	1.6	1.7	0.1	1.8	0.8	0.9
Registered nurses	5.7	0.4	4.0	4.5	2.8	2.2
Other	7.0	5.2	1.7	6.8	3.5	3.4
<b>Tradespersons</b>	29.1	26.3	3.4	29.7	14.4	14.8
Metal fitting and machining tradespersons	2.8	2.4	—	2.4	1.4	1.2
Electrical and electronics tradespersons	4.0	4.5	0.1	4.6	2.0	2.3
Building tradespersons	6.4	6.9	0.1	7.0	3.2	3.5
Other	15.9	12.4	3.2	15.7	7.9	7.8
<b>Clerks</b>	33.0	8.8	26.1	34.9	16.4	17.4
Stenographers and typists	3.8	0.1	3.3	3.4	1.9	1.7
Receptionists, telephonists and messengers	5.0	1.2	4.6	5.7	2.5	2.8
Other	24.2	7.5	18.2	25.8	12.0	12.8
<b>Salespersons and personal service workers</b>	34.2	9.7	23.0	32.7	17.0	16.3
Sales representatives	2.9	2.0	1.3	3.3	1.4	1.6
Sales assistants	15.3	4.0	10.5	14.5	7.6	7.2
Other	16.0	3.7	11.2	14.9	7.9	7.4
<b>Plant and machine operators, and drivers</b>	16.2	15.1	2.1	17.2	8.0	8.6
Road and rail transport drivers	6.9	6.1	0.6	6.6	3.4	3.3
Machine operators	4.4	3.3	1.5	4.8	2.2	2.4
Other	4.9	5.7	—	5.8	2.4	2.9
<b>Labourers and related workers</b>	30.6	21.2	11.6	32.8	15.2	16.3
Trades assistants and factory hands	5.4	3.7	1.4	5.1	2.7	2.5
Agricultural labourers and related workers	7.0	5.8	2.2	8.1	3.5	4.0
Cleaners	6.4	1.3	4.6	5.9	3.2	2.9
Construction and mining labourers	2.0	2.9	0.1	3.0	1.0	1.5
Other	9.8	7.5	3.3	10.7	4.9	5.3
<b>Total employed</b>	<b>201.4</b>	<b>115.0</b>	<b>86.0</b>	<b>200.9</b>	<b>100.0</b>	<b>100.0</b>

<sup>1</sup> For explanation of terms and concepts, refer to *Labour Force, Australia*, ABS catalogue number 6203.0. (Source: Labour Force Estimates—unpublished data.)

## 9

EMPLOYED WAGE AND SALARY EARNERS, SECTOR AND INDUSTRY<sup>1</sup>: Original

Industry	Employees, February 1995					Percentage distribution	
	Private	Public	Private and public			February 1993	February 1995
	No. ('000)	No. ('000)	Males	Females	Persons		
Agriculture, forestry, fishing and hunting	n.a.	0.7	n.a.	n.a.	n.a.	n.a.	n.a.
Mining	1.5	—	1.4	0.1	1.5	1.7	1.1
Manufacturing	20.3	0.1	15.4	4.9	20.4	14.8	15.2
Electricity, gas and water, construction	6.0	2.7	7.6	1.0	8.7	6.8	6.5
Wholesale and retail trade	26.0	—	15.0	11.0	26.1	20.8	19.4
Transport and storage	3.6	1.5	4.1	1.1	5.2	4.1	3.9
Communication	—	2.3	1.8	0.6	2.3	1.6	1.7
Finance, property and business services	10.1	0.9	4.9	6.0	10.9	9.3	8.1
Public administration and defence	—	10.5	6.5	4.0	10.5	7.0	7.8
Community services	14.0	23.4	11.9	25.5	37.4	24.9	27.8
Recreation, personal and other services	10.2	0.6	4.1	6.7	10.8	8.4	8.0
<b>Total all industries</b>	<b>91.8</b>	<b>42.6</b>	<b>73.2</b>	<b>61.2</b>	<b>134.4</b>	<b>100.0</b>	<b>100.0</b>

<sup>1</sup> For explanation of terms and concepts, refer to *Employed Wage and Salary Earners, Australia*, catalogue number 6248.0. (Source: *Employed Wage and Salary Earners*, ABS catalogue number 6248.0.)

## 10

## AVERAGE HOURS WORKED: Original

Month	Average weekly total hours worked, all employed persons <sup>1</sup>			Average weekly overtime hours <sup>2</sup>		Percentage of employees working overtime <sup>2</sup>
	Males	Females	Persons	Per employee	Per employee working overtime	
<b>1993</b>						
August	38.8	27.8	34.1	0.8	6.3	13.2
<b>1995</b>						
August	40.9	29.6	36.0	0.8	5.7	14.4
November	39.7	26.5	33.9	0.9	6.4	14.7
<b>1996</b>						
February	37.7	25.6	32.7	0.9	6.5	14.1
May	40.1	27.0	34.5	0.9	5.6	16.0
August	38.8	27.2	33.9	0.8	5.4	14.4

<sup>1</sup> For explanation of terms and concepts, refer to *Labour Force, Australia*, ABS catalogue number 6203.0.

<sup>2</sup> For explanation of terms and concepts, refer to *Job Vacancies and Overtime, Australia*, ABS catalogue number 6354.0.

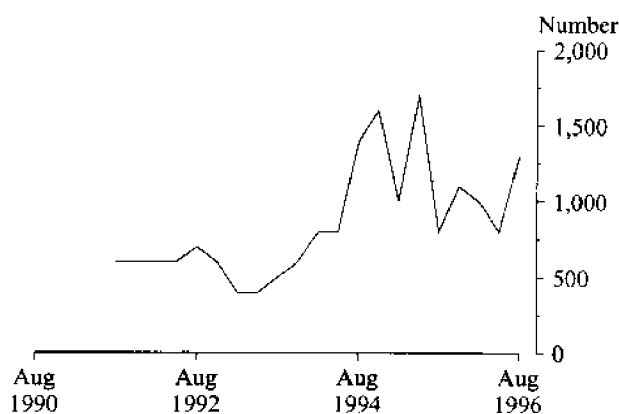
## 11 JOB VACANCIES<sup>1</sup>: Original

Period	Number	Rate <sup>2</sup> %
<b>1993</b>		
August	500	0.4
<b>1995</b>		
August	800	0.6
November	1 100	0.7
<b>1996</b>		
February	1 000	0.6
May	800	0.5
August	1300	0.8

<sup>1</sup> For explanation of terms and concepts refer to *Job Vacancies and Overtime, Australia*, catalogue number 6354.0.

<sup>2</sup> Job vacancies are expressed as a percentage of the number of job vacancies divided by the number of employees plus job vacancies.

### JOB VACANCIES: Original



## 12 INDUSTRIAL DISPUTES<sup>1</sup>: Original

Month	Working days lost	Twelve months ending	Working days lost per thousand employees
<b>1995</b>			
June	700	June	35
July	800	July	38
August	100	August	33
September	100	September	30
October	0	October	30
November	100	November	30
December	200	December	22
<b>1996</b>			
January	800	January	24
February	100	February	23
March	0	March	20
April	100	April	20
May	200	May	19
June	400	June	17
<b>Twelve months ended 1996</b>			
June	2 900		

<sup>1</sup> For explanation of terms and concepts, refer to *Industrial Disputes, Australia*, ABS catalogue number 6321.0.

# 13

## AVERAGE WEEKLY EARNINGS OF EMPLOYEES<sup>1</sup>: Original and trend

Quarter	Survey reference period	Full-time adult males		All males	Full-time adult females		All females	Full-time adult persons		All employees
		Weekly ordinary time earnings	Weekly total earnings	Weekly total earnings	Weekly ordinary time earnings	Weekly total earnings	Weekly total earnings	Weekly ordinary time earnings	Weekly total earnings	Weekly total earnings
		\$	\$	\$	\$	\$	\$	\$	\$	\$
ORIGINAL										
<b>1995</b>										
June	19 May	635.70	678.60	608.80	546.50	556.90	385.60	606.40	638.60	500.70
September	18 August	634.60	675.50	598.70	544.50	555.10	384.80	604.20	634.80	495.60
December	17 November	647.90	687.90	615.50	556.10	569.00	403.20	617.30	648.20	513.80
<b>1996</b>										
March	16 February	652.70	691.40	617.80	561.10	569.30	391.80	622.90	651.70	510.00
June	17 May	663.40	702.80	621.90	570.10	583.20	389.30	631.90	662.40	503.30
TREND										
<b>1995</b>										
June	19 May	633.50	675.20	604.20	546.30	557.80	390.10	604.80	636.60	501.00
September	18 August	637.90	679.80	609.10	548.90	559.80	392.00	608.60	640.30	504.90
December	17 November	645.10	685.20	612.00	553.70	564.50	392.70	614.20	645.10	506.70
<b>1996</b>										
March	16 February	653.60	691.70	614.30	560.50	571.30	392.00	622.30	651.40	506.20
June	17 May	663.70	701.10	618.10	568.50	580.30	391.50	631.50	659.50	504.70

<sup>1</sup> For explanation of terms and concepts, refer to *Average Weekly Earnings, States and Australia* (Catalogue No. 6302.0).  
(Source: *Average Weekly Earnings, States and Australia*, ABS catalogue number 6302.0.)

# 14

## WEEKLY AWARD RATES OF PAY INDEXES, FULL-TIME ADULT EMPLOYEES<sup>1</sup>: Original (Base: June 1985 = 100.0)

Industry	1993		1995		1996	
	July	July	July	July	May	June
Mining	137.7	137.7	137.7	137.7	137.7	137.7
Manufacturing	145.0	149.6	149.6	152.1	152.1	152.1
Electricity, gas and water	130.9	136.3	136.3	136.6	136.6	136.6
Construction	141.3	144.0	144.0	145.1	145.1	145.1
Wholesale trade	137.6	142.6	142.6	143.5	143.5	143.5
Retail trade	136.5	142.4	142.4	142.7	142.8	142.8
Transport and storage	137.9	139.9	139.9	143.6	143.6	143.6
Communication	135.4	135.4	135.4	135.4	135.4	135.4
Finance, property and business services	137.4	138.1	138.1	139.6	139.6	139.6
Public administration and defence	135.2	152.9	152.9	155.1	155.1	155.1
Community services	140.3	144.8	144.8	145.2	145.2	145.2
Recreation, personal and other services	146.0	153.0	153.0	153.8	153.8	153.8
<b>Total all industries</b>	<b>139.2</b>	<b>144.5</b>	<b>144.5</b>	<b>145.7</b>	<b>145.7</b>	<b>145.7</b>

<sup>1</sup> For explanation of terms and concepts, refer to *Award Rates of Pay Indexes, Australia*, ABS catalogue number 6312.0.  
(Source: *Award Rates of Pay Indexes, Australia*, ABS catalogue number 6312.0.)

## 15

SUMMARY OF ANNUAL MOVEMENTS IN WAGES AND PRICES: **Original**

Period	CPI, All groups Hobart	Price index of materials used in house building, All groups, Hobart	Price index of materials used in building other than house building, All groups, Hobart	Average weekly total, earnings, full-time adult employees	Weekly award rates of pay index, full-time adult employees
PERCENTAGE CHANGE FROM PREVIOUS YEAR					
<b>1993</b>					
July	..	1.8	1.8	..	0.4
<b>1995</b>					
July	..	5.2	3.5	..	1.4
<b>1995</b>					
November	..	3.8	3.2	1.8	1.6
December	4.4	3.4	3.0	..	1.8
<b>1996</b>					
January	..	3.2	2.9	..	1.4
February	..	2.2	2.4	3.2	1.4
March	3.4	1.6	2.0	..	1.2
April	..	1.7	1.4	..	1.2
May	..	0.6	1.2	3.7	1.1
June	3.0	0.7	1.0	..	1.3
July	..	- 0.1	1.0	..	0.9

**(Sources:**

Consumer Price Index, ABS catalogue number 6401.0,  
 Price Index of Materials Used in House Building, ABS catalogue number 6408.0,  
 Price Index of Materials Used in Other than House Building, ABS catalogue number 6407.0,  
 Average Weekly Earnings, States and Australia, ABS catalogue number 6302.0,  
 Award Rates of Pay Indexes, Australia, ABS catalogue number 6312.0.)

## 16

HOUSE PRICE INDEX NUMBERS<sup>1</sup>, HOBART: **Original**

(Base of each Index: 1989-90 = 100.0)

	Established house price index		Project home price index	
	Index	% change <sup>2</sup>	Index	% change <sup>2</sup>
1993-94	122.5	5.1	117.7	3.2
1994-95	129.0	5.3	121.3	3.1
1995-96	129.8	0.6	123.4	1.7
<b>1994</b>				
June	126.0	2.4	119.4	1.4
September	128.2	1.7	120.1	0.6
December	128.2	0.0	120.5	0.3
<b>1995</b>				
March	129.4	0.9	121.6	0.9
June	130.1	0.5	123.1	1.2
September	129.2	- 0.7	123.5	0.3
December	129.1	- 0.1	123.5	0.0
<b>1996</b>				
March	129.8	+ 0.5	123.3	- 0.2
June	131.2	+ 1.1	123.3	0.0

<sup>1</sup> Used in calculating the mortgage interest charges component of the Consumer Price Index.<sup>2</sup> Percentage change over previous period.

(Source: House Price Indexes: Eight Capital Cities, ABS catalogue number 6416.0)

## 17

CONSUMER PRICE INDEX, HOBART AND EIGHT CAPITAL CITIES COMBINED<sup>1, 2</sup>: **Original**  
 (Base of each index: year 1989-90 = 100.0)

<i>Hobart</i>						
<i>Period</i>	<i>Food</i>	<i>Clothing</i>	<i>Housing<sup>3</sup></i>	<i>Household equipment and operation</i>	<i>Transportation</i>	<i>Tobacco and alcohol</i>
<b>1993</b>						
December	111.7	106.8	93.4	111.8	112.3	133.4
<b>1994</b>						
March	112.6	106.4	93.3	112.2	111.9	134.3
June	112.2	106.4	94.2	112.4	112.8	134.8
September	113.9	106.6	94.8	112.8	113.9	137.2
December	113.3	105.3	97.6	113.9	115.0	139.1
<b>1995</b>						
March	115.4	105.0	102.7	114.9	115.1	140.3
June	116.1	106.1	104.5	115.4	117.2	143.1
September	117.3	105.9	106.0	116.5	119.4	144.3
December	117.1	105.6	106.5	117.5	120.1	145.9
<b>1996</b>						
March	118.1	106.3	107.2	117.8	119.0	150.3
June	118.4	106.0	107.6	118.5	119.8	153.3

<i>Period</i>	<i>Hobart</i>				<i>Weighted average of eight capital cities</i>	
	<i>Health and personal care</i>	<i>Recreation and education</i>	<i>Index, all groups</i>	<i>% change over previous period, all groups</i>	<i>Index</i>	<i>% change over previous period</i>
<b>1993</b>						
December	134.5	111.0	111.6	- 0.5	110.0	+ 0.2
<b>1994</b>						
March	137.5	109.7	111.9	+ 0.3	110.4	+ 0.4
June	137.9	111.3	112.4	+ 0.4	111.2	+ 0.7
September	138.7	111.7	113.3	+ 0.8	111.9	+ 0.6
December	138.7	113.0	114.2	+ 0.8	112.8	+ 0.8
<b>1995</b>						
March	140.4	115.4	116.1	+ 1.7	114.7	+ 1.7
June	141.0	114.0	117.1	+ 0.9	116.2	+ 1.3
September	146.7	113.3	118.4	+ 1.1	117.6	+ 1.2
December	146.9	115.8	119.2	+ 0.7	118.5	+ 0.8
<b>1996</b>						
March	149.7	117.1	120.1	+ 0.8	119.0	+ 0.4
June	150.5	116.0	120.6	+ 0.4	119.8	+ 0.7

<sup>1</sup> Further information on construction of CPI indexes is contained in the bulletin *The Australian Consumer Price Index Concepts, Sources and Methods* (Catalogue No. 6461.0).

<sup>2</sup> The CPI is now published on a reference base of 1989-90 = 100.0.

(Source: *Consumer Price Index*, ABS catalogue number 6401.0.)



PRICE INDEX OF MATERIALS USED IN BUILDING OTHER THAN HOUSE BUILDING, HOBART: **Original**  
(Base year: 1989-90 =100.0)

<i>Index numbers for selected major building materials</i>							
<i>Period</i>	<i>Structural timber</i>	<i>Clay bricks</i>	<i>Ready mixed concrete</i>	<i>Precast concrete products</i>	<i>Steel decking, cladding etc.</i>	<i>Structural steel</i>	
<b>1995</b>							
May	125.8	118.0	118.3	122.5	107.5	117.0	
June	125.8	118.1	118.0	122.5	107.5	119.6	
July	124.9	118.1	117.1	130.3	110.7	119.6	
August	122.0	118.1	117.0	130.3	110.7	119.6	
September	122.1	123.2	116.7	130.3	111.0	119.6	
October	119.7	123.2	117.2	130.3	111.0	120.9	
November	120.1	123.2	116.3	130.3	111.0	120.9	
December	120.1	123.3	114.5	130.4	111.0	121.9	
<b>1996</b>							
January	120.1	123.3	116.9	130.4	111.0	121.9	
February	116.9	123.3	115.9	128.4	112.1	121.9	
March	116.9	123.7	113.2	128.4	112.3	121.9	
April	116.9	123.7	113.2	128.4	112.3	122.7	
May p	114.4	123.7	112.9	128.4	112.3	122.7	
June p	113.8	124.5	112.1	128.4	112.3	123.7	
July p	114.5	124.5	114.2	132.6	112.3	125.2	
<i>Index numbers for selected major building materials</i>							
<i>Period</i>	<i>Reinforcing steel bar, fabric and mesh</i>	<i>Aluminium windows</i>	<i>Fabricated steel products</i>	<i>Builders' hardware</i>	<i>Sand &amp; aggregate</i>	<i>Paint &amp; other coatings</i>	<i>Non-ferrous pipes &amp; fittings</i>
<b>1995</b>							
May	105.9	104.5	107.6	114.6	133.1	115.5	186.0
June	105.7	104.5	107.6	118.1	133.1	114.9	183.3
July	107.0	104.5	107.6	118.9	133.1	116.3	184.9
August	107.4	104.5	107.7	118.9	133.1	119.5	184.4
September	109.2	104.5	107.6	120.4	133.1	118.9	169.0
October	109.2	104.5	108.3	120.7	133.1	118.9	169.1
November	109.2	104.5	108.3	119.2	133.1	118.7	169.1
December	109.2	104.5	108.3	117.7	133.1	121.4	169.1
<b>1996</b>							
January	109.2	104.5	108.3	118.3	133.1	121.5	169.1
February	109.2	104.5	108.1	117.7	133.1	121.5	169.4
March	109.2	104.7	108.3	117.7	133.1	121.5	169.4
April	109.2	104.4	111.5	117.3	133.1	118.1	172.8
May p	109.2	104.4	111.5	116.0	133.1	120.6	174.5
June p	109.2	104.4	111.9	116.1	133.1	124.5	174.5
July p	109.2	104.4	111.9	115.4	133.1	126.1	168.7

(Source: Price Index of Materials Used in Other than House Building, ABS catalogue number 6407.0.)

*continued*



Year or month	Dairy products <sup>1</sup>			Staff-hours worked <sup>2</sup>	
	Whole milk <sup>4</sup>	Factory butter <sup>5</sup>	Factory cheese	Textile manufacturing <sup>6</sup>	Vegetable preserving
	million litres	tonnes	tonnes	'000	'000
1993-94	447.3	7 846	22 461	1 575	2 002
1994-95	436.5	8 105	20 529	1 527	1 838
1995-96	513.8	9 589	25 371	1 443	1 784
<b>1993</b>					
June	13.1	341	764	151	170
<b>1995</b>					
June	12.3	214	655	124	160
<b>1996</b>					
April	36.9	873	r 1 738	106	182
May	31.0	564	r 1 576	131	185
June	16.5	706	991	110	143

Year or month	Newsprint <sup>7</sup>	Refined zinc	Metal, refin. index <sup>3</sup>	Electricity	Gas
	'000 tonnes	'000 tonnes		million kW.h	'000 MJ
1993-94	208.9	193.8	105.5	8 855	55 767
1994-95	222.7	189.8	98.3	8 688	51 933
1995-96	242.9	207.8	104.7	9 100	41 035
<b>1993</b>					
June	18.7	22.2	124.3	810	6 750
<b>1995</b>					
June	19.9	17.3	99.0	804	5 125
<b>1996</b>					
April	19.5	17.9	106.3	751	3 087
May	20.6	18.2	114.8	833	3 840
June	19.6	17.3	110.5	826	3 863

<sup>1</sup> Source: Australian Dairy Corporation.

<sup>2</sup> Changing productivity per staff-hour makes these indicators unsatisfactory for long-term comparisons.

<sup>3</sup> Metallurgical refining index (Base: 1979-80 = 100.0) Output from selected establishments covering the smelting and refining of ferro-alloys, zinc and aluminium. The weighting pattern is based on the establishments' value added as derived from the 1979-80 Manufacturing Census. For multi-product establishments, value added was apportioned to products on the basis of gross receipts from each product.

<sup>4</sup> Includes the whole milk equivalent of farm cream intake.

<sup>5</sup> Includes butter equivalent of butter oil.

<sup>6</sup> Includes spinning, weaving and carpet making. Reported by establishments which manufacture textiles only, or manufacture clothing and textiles in the one plant.

<sup>7</sup> Excludes production of directory newsprint and high grade specialty paper.

(Source: ABS unpublished data.)

## 20

LIVESTOCK SLAUGHTERING: **Original**

Year or month	Cattle						Pigs
	Bulls, bullocks and steers	Cows and heifers	Calves	Sheep	Lambs		
	'000	'000	'000	'000	'000		
1993-94	101.8	85.2	23.2	526.1	437.8	95.8	
1994-95	111.0	96.9	29.2	569.3	477.2	92.9	
1995-96 p	99.2	85.7	41.7	390.2	410.0	81.8	
<b>1994</b>							
July	6.4	4.8	1.8	31.7	39.3	7.6	
<b>1995</b>							
July p	8.1	5.8	1.1	18.6	25.6	6.5	
August p	5.0	4.8	14.0	18.2	27.3	7.3	
September p	5.6	4.4	16.6	18.0	29.0	7.1	
October p	7.0	6.3	5.3	25.5	28.6	6.1	
November p	8.8	7.1	0.8	36.5	34.9	6.9	
December p	9.5	7.6	0.5	44.8	40.5	8.4	
<b>1996</b>							
January p	11.2	6.8	0.1	43.6	38.9	6.1	
February p	8.6	7.8	0.1	39.8	40.4	6.3	
March p	9.0	8.9	0.2	40.6	41.2	7.2	
April p	6.6	6.4	0.9	31.4	30.7	6.0	
May p	10.8	10.7	1.4	42.5	39.7	7.3	
June p	9.1	9.0	0.7	30.6	33.1	6.6	
July p	7.6	5.5	1.8	22.9	26.0	6.8	

(Source: Livestock Products, Australia, ABS catalogue number 7215.0.)

## 21

LIVESTOCK SLAUGHTERING: **Seasonally adjusted and trend**

Month	Seasonally adjusted			Trend		
	Cattle and calves	Sheep and lambs	Pigs	Cattle and calves	Sheep and lambs	Pigs
	no.	no.	no.	no.	no.	no.
<b>1994</b>						
July	14 587	95 834	7 741	17 211	99 472	7 925
<b>1995</b>						
July	17 108	61 018	6 891	20 129	70 083	7 345
August	18 875	68 669	7 418	19 602	68 228	7 149
September	19 047	68 094	7 287	19 652	68 207	7 006
October	19 681	71 035	6 803	20 164	69 607	6 922
November	20 691	69 299	6 524	20 504	70 904	6 896
December	24 723	77 577	6 761	20 391	71 171	6 910
<b>1996</b>						
January	18 563	72 699	7 354	19 935	69 880	6 903
February	18 684	65 606	6 862	19 329	67 554	6 865
March	17 537	63 666	7 006	18 954	65 403	6 793
April	15 710	54 941	6 437	18 885	64 048	6 681
May	23 016	72 187	6 607	19 022	63 595	6 577
June	21 725	62 228	6 067	19 118	63 603	6 504
July	16 209	66 010	6 921	19 413	64 237	6 449

(Source: ABS Unpublished data.)

## 22

### MEAT PRODUCTION<sup>1</sup>: Original

Year or month	Beef tonnes	Veal tonnes	Mutton tonnes	Lamb tonnes	Pigmeat <sup>2</sup> tonnes	Total tonnes
1993-94	47 458	515	9 992	7 047	6 019	71 031
1994-95	49 827	1 059	11 230	8 412	5 982	76 511
1995-96 p	44 812	1 091	8 283	7 727	5 346	67 259
<b>1994</b>						
July	2 710	118	628	715	334	4 505
<b>1995</b>						
June	4 864	38	877	829	553	7 161
July p	3 569	30	389	481	426	4 895
August p	2 312	353	378	514	475	4 031
September p	2 354	418	372	546	470	4 161
October p	3 151	141	529	540	399	4 761
November p	3 846	24	797	659	449	5 775
December p	4 145	17	983	764	546	6 456
<b>1996</b>						
January p	4 467	4	937	733	397	6 538
February p	4 122	5	852	761	410	6 150
March p	4 175	9	860	777	470	6 290
April p	3 012	26	657	579	397	4 671
May p	5 230	42	892	749	476	7 389
June p	4 429	21	638	624	430	6 143
July p	3 203	48	475	488	443	4 657

<sup>1</sup> Carcass weight.

<sup>2</sup> Includes pork used for production of bacon and ham.

(Source: *Livestock Products, Australia*, ABS catalogue number 7215.0.)

## 23

### PRINCIPAL MINERAL CONCENTRATES PRODUCED: Original

Year or quarter	Copper	Iron (pellets)	Lead	Lead- zinc	Tin	Zinc
Year or quarter	'000 tonnes	'000 tonnes	'000 tonnes	'000 tonnes	'000 tonnes	'000 tonnes
1993-94	128.1	1 565.9	93.4	57.5	13.4	316.5
1994-95	59.4	1 483.8	97.4	45.3	14.3	350.6
1995-96 p	53.5	1 681.3	106.3	38.6	16.0	361.5
<b>1995</b>						
March	3.4	301.3	18.4	9.6	3.2	90.5
June	3.9	415.8	26.5	15.8	4.2	86.2
September	4.5	463.0	r 28.4	11.2	4.1	93.6
December	r 7.6	416.0	29.7	6.8	4.1	98.1
<b>1996</b>						
March	r 19.9	326.9	24.1	11.4	r 3.5	84.8
June p	21.5	475.4	24.1	9.2	4.3	85.0

(Source: Tasmania—Development and Resources)

## 24

SAWMILLS AND PLYWOOD MILLS, LOGS DELIVERED AND TIMBER PRODUCED: **Original**

Year or quarter	Tasmanian-grown logs delivered					Sawn, peeled and sliced timber produced <sup>1</sup>				
	Eucalypts	Hardwoods, excluding eucalypts <sup>2</sup>	Plantation <sup>3</sup> softwoods	Native softwoods <sup>4</sup>	Total	Eucalypts	Hardwoods, excluding eucalypts <sup>2</sup>	Plantation <sup>3</sup> softwoods	Native softwoods <sup>4</sup>	Total
1993-94	584.3	15.3	299.2	1.5	900.4	203.5	3.1	141.0	0.5	348.0
1994-95	653.1	12.6	304.9	2.8	973.4	212.5	4.3	142.7	0.6	360.1
1995-96	597.4	12.4	342.4	1.4	953.6	189.0	4.4	151.1	0.5	345.0
<b>1994</b>										
June	149.4	4.5	76.1	0.4	230.4	52.1	1.1	34.1	0.2	87.5
September	170.2	3.8	76.3	0.6	250.9	59.5	1.2	35.1	0.1	95.9
December	163.0	3.7	68.8	0.3	235.8	55.2	1.0	36.1	0.2	92.5
<b>1995</b>										
March	132.3	3.0	82.5	1.1	218.9	44.5	1.0	37.0	0.1	82.6
June	187.6	2.1	77.4	0.7	267.8	53.4	1.1	34.6	0.1	89.2
September	182.6	1.7	79.6	0.2	264.2	54.4	1.3	35.8	0.1	91.6
December	137.8	1.4	69.9	0.2	209.4	48.1	1.0	35.8	0.2	85.2
<b>1996</b>										
March	135.4	6.4	97.7	0.3	239.8	40.7	0.9	40.9	0.1	82.7
June	141.6	2.9	95.1	0.6	240.2	45.7	1.2	38.6	0.1	85.6

<sup>1</sup> Includes plywood, veneer and sliced timber production converted to an equivalent cubic measurement.

<sup>2</sup> Includes blackwood, myrtle, sassafras etc.

<sup>3</sup> Radiata pine.

<sup>4</sup> Includes Huon pine, celery top pine and King William pine.

(Source: ABS unpublished data.)

## 25

CHIPPING AND GRINDING OF WOOD<sup>1</sup>: **Original**

Year or quarter	Producing locations <sup>2</sup>	Materials used <sup>3</sup>		
		Logs delivered <sup>4</sup>	Sawmill offcuts	Chipped and ground wood production
	no.	'000 m <sup>3</sup>	'000 m <sup>3</sup>	('000 tonnes green weight)
1993-94	30	3 448.8	339.8	3 726.1
1994-95	31	4 064.1	394.2	4 343.1
1995-96	33	3 510.0	457.9	3 820.1
<b>1994</b>				
June	30	841.6	83.3	944.0
September	30	939.8	86.3	991.3
December	31	1 065.8	92.0	1 115.4
<b>1995</b>				
March	31	1 090.6	95.7	1 177.1
June	31	967.9	120.1	1 059.3
September	32	935.6	118.2	1 044.1
December	31	932.1	104.6	939.9
<b>1996</b>				
March	32	842.6	109.8	958.0
June	33	799.6	125.3	878.1

<sup>1</sup> Both hardwoods and softwoods, separate details are not available.

<sup>2</sup> Capable of producing at end of year or actually producing during quarter.

<sup>3</sup> Data reported by weight, converted to cubic measure by the factor 0.95 m<sup>3</sup> per tonne.

<sup>4</sup> Includes log equivalent of limbwood and billets.

(Source: ABS unpublished data.)

## 26

LOGS DELIVERED FOR MILLING OR CHIPPING: **Original**

Year or quarter	Sawmilling and plywood milling			Chipping and grinding <sup>1</sup>			Total		
	Crown land <sup>2</sup>	Private land	Total	Crown land <sup>2</sup>	Private land	Total	Crown land <sup>2</sup>	Private land	Total
	'000 m <sup>3</sup>	'000 m <sup>3</sup>	'000 m <sup>3</sup>	'000 m <sup>3</sup>	'000 m <sup>3</sup>	'000 m <sup>3</sup>	'000 m <sup>3</sup>	'000 m <sup>3</sup>	'000 m <sup>3</sup>
1993-94	696.5	203.9	900.4	1 697.0	1 751.8	3 448.8	2 393.5	1 955.7	4 349.2
1994-95	780.3	193.2	973.4	1 966.8	2 097.3	4 064.1	2 747.1	2 290.4	5 037.6
1995-96	767.7	185.9	953.6	1 579.6	1 930.4	3 510.0	2 347.3	2 116.2	4 463.5
<b>1994</b>									
June	182.2	48.3	230.4	397.7	443.9	841.6	579.9	492.2	1 072.0
September	199.8	51.1	250.9	481.0	458.8	939.8	680.8	509.9	1 190.7
December	180.6	55.2	235.8	467.9	597.8	1 065.8	648.5	653.0	1 301.6
<b>1995</b>									
March	184.7	34.2	218.9	480.3	610.3	1 090.6	665.0	644.5	1 309.5
June	215.2	52.7	267.8	537.6	430.3	967.9	752.8	483.0	1 235.8
September	212.5	51.7	264.2	438.2	497.4	935.6	650.6	549.2	1 199.8
December	163.9	45.4	209.4	388.3	543.8	932.1	552.2	589.3	1 141.5
<b>1996</b>									
March	200.8	39.0	239.8	405.3	437.3	842.6	606.1	476.3	1 082.4
June	190.4	49.7	240.2	347.9	451.8	799.6	538.3	501.5	1 039.8

<sup>1</sup> Logs used are generally below sawmilling standard; includes log equivalent of limbwood and billets.

<sup>2</sup> Comprises all areas (including concession areas) from which royalties are payable to Forestry Tasmania.  
(Source: ABS unpublished data.)

# 27

## BUILDING APPROVALS: Original

Year or month	New residential building			Value of total dwelling units \$'000	Conversions etc. no.	Value of alterations and additions <sup>1</sup> to residential building \$'000	Value of non-residential building <sup>2</sup>		Total value of building \$'000
	Houses	Other <sup>3</sup>	Total dwelling units				Private	Total	
	no.	no.	no.				\$'000	\$'000	
1993-94	3 113	1 034	4 147	301 963	11	39 522	81 251	145 922	487 407
1994-95	2 576	596	3 172	244 623	14	39 963	117 984	161 567	446 152
1995-96	1 938	601	2 539	217 445	7	36 890	119 849	216 752	471 086
<b>1993</b>									
July	255	85	340	23 704	2	2 305	8 654	13 222	39 231
<b>1995</b>									
July	176	37	213	17 606	—	2202	5 841	9 495	29 303
<b>1996</b>									
April	141	104	245	22 811	1	3 669	9 953	11 840	38 321
May	143	32	175	14 219	—	3 014	8 087	32 308	49 541
June	132	62	194	16 159	1	3 472	9 504	11 641	31 272
July	108	13	121	9 527	—	2 282	24 234	38 187	49 996

<sup>1</sup> Valued at \$10,000 and over.

<sup>2</sup> Comprises non-residential building (new plus alterations and additions) valued at \$50,000 and over.

<sup>3</sup> New individual dwelling units (e.g. flats, home units and villa units).

(Source: *Building Approvals, Tasmania*, ABS catalogue number 8731.6.)

# 28

## DWELLING COMMENCEMENTS: Original

Year or month	Houses						Other residential buildings <sup>1</sup> no.	Total dwelling units no.
	Double brick	Brick veneer	Fibre cement	Timber	Other and not stated	Total		
	no.	no.	no.	no.	no.	no.		
1993-94	306	2 120	103	441	79	3 049	973	4 022
1994-95	132	1 816	93	402	62	2 505	645	3 150
1995-96	224	1 160	79	311	86	1 860	568	2 428
<b>1993</b>								
June	15	175	9	20	10	229	117	346
<b>1995</b>								
June	3	127	11	31	6	178	53	231
<b>1996</b>								
March	25	78	6	20	14	143	14	157
April	24	71	7	23	6	131	130	261
May	36	66	4	27	6	139	32	171
June	43	40	5	23	19	130	141	271

<sup>1</sup> New individual dwelling units (e.g. flats, home units and villa units).

(Source: *Dwelling Unit Commencements Reported by Approving Authorities, Tasmania*, ABS catalogue number 8741.6.)



## 29

BANKING STATISTICS<sup>1</sup>: Original

Month	Deposits				
	Current bearing interest	Current - not bearing interest	Fixed	Investment savings accounts	Statement savings accounts
	\$m	\$m	\$m	\$m	\$m
<b>1995</b>					
July	568	275	1 572	552	188
August	580	270	1 594	550	189
September	599	263	1 673	549	192
October	605	258	1 690	547	189
November	620	270	1 672	546	190
December	628	279	1 659	546	191
<b>1996</b>					
January	646	272	1 646	546	190
February	665	265	1 639	544	174
March	690	271	1 657	550	160
April	689	270	1 693	547	160
May	674	262	1 697	541	158
June	659	260	1 707	541	158
July	687	253	1 737	540	161

Month	Deposits			
	Passbook/School savings accounts	Other	Total	Loans <sup>2</sup>
	\$m	\$m	\$m	\$m
<b>1995</b>				
July	198	128	3 480	4 231
August	194	130	3 507	4 276
September	191	131	3 596	4 304
October	189	132	3 609	4 298
November	185	129	3 612	4 349
December	177	127	3 607	4 374
<b>1996</b>				
January	175	127	3 601	4 372
February	171	127	3 585	4 422
March	171	128	3 626	4 450
April	168	130	3 657	4 471
May	164	127	3 623	4 511
June	161	128	3 615	4 529
July	156	127	3 660	4 532

<sup>1</sup> Details are the averages of weekly figures for each month. The figures are derived from returns submitted by banks authorised under the *Banking Act* together with similar returns voluntarily submitted by the State banks; they exclude the Reserve Bank.

<sup>2</sup> Excludes non-resident loans.

(Source: Reserve Bank of Australia.)

## 30

PRIVATE NEW CAPITAL EXPENDITURE BY TYPE OF ASSET<sup>1</sup>: Original

Year or quarter	New buildings and structures			Equipment, plant, and machinery		Total
	\$m		\$m			
1993-94	100		341		441	
1994-95	133		503		636	
1995-96	180		400		580	
<b>1995</b>						
June	41		170		211	
September	51		95		146	
December	47		92		139	
<b>1996</b>						
March	44		96		140	
June	37		117		154	

<sup>1</sup> Estimates based on a sample survey and therefore subject to sampling variability. Covers selected industries only—mining, manufacturing, finance, property and other selected industries.

(Source: *State Estimates of Private New Capital Expenditure*, ABS catalogue number 5646.0.)

# 31

## PASSENGER ARRIVALS AND DEPARTURES, TASMANIA<sup>1</sup>: Original

Period	By air			By sea	Total	Total departures <sup>2</sup>	Cruise ships	
	Interstate arrivals	International arrivals					Arrivals	Departures
1992	652 092	4 428		114 969	771 489	761 109	4 608	4 608
1993	694 244	5 144		115 381	814 769	814 835	2 033	2 033
1994	745 508	4 166		128 644	878 318	880 936	6 592	6 592
1995	811 784	3 982		116 869	932 635	931 278	6 199	6 199
<b>1995</b>								
June	57 146	211		7 678	65 035	62 555	—	—
<b>1996</b>								
April	72 146	355		9 652	82 153	84 390	—	—
May	60 990	182		4 861	66 033	78 425	—	—
June	63 351	120		5 417	68 888	66 010	—	—

<sup>1</sup> The following persons are not included in these statistics: passengers under three years of age accompanied by an adult; passengers travelling on chartered flights with minor carriers; passengers travelling on private or VIP flights; and passengers from or departing for overseas other than direct flights to New Zealand.

<sup>2</sup> The proportion of departing passengers who were visitors was shown to be about 58% in the 1981 Tasmanian Visitor Survey, 55% in the 1984 Tasmanian Visitor Survey, 53% in the 1986 Tasmanian Visitor Survey, 65% in the 1990 Tasmanian Visitor Survey, 60% in the 1994 survey, and 58% in the 1995 Tasmanian Visitor Survey.

(Source: Department of Tourism)

# 32

## TOTAL PASSENGER ARRIVALS BY AIR AND SEA, TASMANIA: Original, seasonally adjusted and trend

Period	Original	Seasonally adjusted <sup>1</sup>	Trend
<b>1995</b>			
June	65 035	78 183	77 636
<b>1996</b>			
April	82 153	75 312	78 876
May	66 033	83 587	80 039
June	68 888	82 722	81 326

<sup>1</sup> There is an annual recalculation of seasonal adjustment factors to include the most recent year's arrivals. This occurs at the end of each financial year and may cause revisions to previously published seasonally adjusted and trend figures. A full time series of seasonally adjusted and trend series from January 1971 is available on request, telephone (002) 20 5870.

(Source: Department of Tourism. ABS unpublished data.)

HOTELS, MOTELS, ETC. WITH FACILITIES						
Period	Original		Room nights		Original	
	Establishments <sup>2</sup> no.	Guest rooms <sup>2</sup> no.	Seasonally adjusted <sup>1</sup> no.	Trend estimates <sup>1</sup> no.	Room occupancy rate %	Takings from accommodation \$'000
<b>June quarter</b>						
1994	177	5 322	n.a.	n.a.	51.2	17 799
1995	179	5 408			48.4	17 954
1996	180	5 523			46.7	17 815
<b>1994</b>						
April	n.a.	n.a.	92 505	88 723	61.1	6 948
May	n.a.	n.a.	92 211	89 629	52.8	6 451
June	177	5 322	84 624	90 071	39.5	4 399
<b>1995</b>						
April	n.a.	n.a.	84 545	87 811	55.6	7 028
May	n.a.	n.a.	85 913	88 469	48.0	6 056
June	179	5 408	90 857	89 209	41.6	4 870
<b>1996</b>						
April	n.a.	n.a.	86 789	86 889	56.2	7 353
May	n.a.	n.a.	83 759	85 719	45.7	5 766
June	180	5 523	85 705	84 912	38.2	4 696
HOLIDAY UNITS						
Period	Original		Unit nights		Original	
	Establishments <sup>2</sup> no.	Units <sup>2</sup> no.	Seasonally adjusted <sup>1</sup> no.	Trend estimates <sup>1</sup> no.	Unit occupancy rate %	Takings from accommodation \$'000
<b>June quarter</b>						
1994	52	793	n.a.	n.a.	49.8	2 455
1995	54	830			43.6	2 343
1996	55	846			43.3	2 374
<b>1994</b>						
April	n.a.	n.a.	14 516	13 481	62.3	1 046
May	n.a.	n.a.	13 977	13 501	47.8	786
June	52	793	12 407	13 439	39.3	623
<b>1995</b>						
April	n.a.	n.a.	13 749	12 543	55.9	1 050
May	n.a.	n.a.	11 809	12 428	38.7	685
June	54	830	11 956	12 252	36.2	608
<b>1996</b>						
April	n.a.	n.a.	14 486	12 565	57.6	1 090
May	n.a.	n.a.	11 651	12 426	37.4	674
June	55	846	11 829	12 296	35.2	611
CARAVAN PARKS						
Period	Original		Site nights		Original	
	Establishments <sup>2</sup> no.	Sites and cabins <sup>2</sup> no.	Seasonally adjusted <sup>1</sup> no.	Trend estimates <sup>1</sup> no.	Site occupancy rate %	Takings from accommodation \$'000
<b>June quarter</b>						
1994	70	6 708	n.a.	n.a.	28.1	1 435
1995	75	6 625			30.3	1 523
1996	73	6 479			30.5	1 575
<b>1994</b>						
April	n.a.	n.a.	64 127	61 190	32.9	648
May	n.a.	n.a.	61 494	62 200	26.3	428
June	70	6 708	60 791	63 185	25.2	359
<b>1995</b>						
April	n.a.	n.a.	67 308	65 390	35.0	700
May	n.a.	n.a.	65 379	65 540	28.4	438
June	75	6 625	65 727	65 523	27.7	385
<b>1996</b>						
April	n.a.	n.a.	63 649	65 913	33.9	712
May	n.a.	n.a.	63 992	65 960	29.4	467
June	73	6 479	68 240	66 035	28.3	395

<sup>1</sup> Seasonally adjusted and trend estimates are revised annually because of yearly seasonal re-analysis.  
(Source: *Tourist Accommodation*, ABS catalogue number 8635.6.)

<sup>2</sup> At end of quarter.

## 34

REGISTRATIONS OF NEW MOTOR VEHICLES<sup>1</sup>: Original

Year or month	Passenger vehicles	Other vehicles <sup>2</sup>	Total (excl. motor cycles)	Vehicles registered by vehicle rental businesses <sup>3</sup>	Motor cycles
	no.	no.	no.	no.	no.
1993	10 019	2 478	12 497	1 507	440
1994	10 543	2 837	13 380	1 708	376
1995	10 919	2 874	13 793	1 952	393
<b>1994</b>					
July	944	208	1 152	222	29
<b>1995</b>					
July	772	257	1 029	65	21
August	1 061	208	1 269	245	28
September	1 076	184	1 260	373	36
October	1 072	208	1 280	301	35
November	702	151	853	62	32
December	1 489	245	1 734	842	37
<b>1996</b>					
January	670	203	873	5	36
February	777	212	989	62	48
March	764	197	961	3	33
April	659	159	818	—	30
May	916	286	1 202	3	44
June	744	250	994	9	32
July p	1 099	242	1 341	232	26

<sup>1</sup> Includes State and Commonwealth Government-owned motor vehicles other than those belonging to the defence services. Excludes tractors, plant and equipment, caravans and trailers.

<sup>2</sup> Comprises utilities, panel vans, rigid and articulated trucks and other truck-type vehicles (i.e. motor vehicles designed for purposes other than freight carrying, e.g. campervans, tow trucks, ambulances and hearses) and buses.

<sup>3</sup> These figures are included in previous columns.

(Source: *Motor Vehicle Registrations Australia*. ABS catalogue number 9301.0. ABS unpublished data.)

## 35

TURNOVER OF RETAIL ESTABLISHMENTS AT CURRENT PRICES<sup>1</sup>: Original and trend

Period	Original \$m	Trend estimates	
		\$m	Change from corresponding month of previous year %
<b>1994</b>			
July	224.0	231.2	4.9
<b>1995</b>			
July	225.3	237.0	2.5
August	230.5	237.0	2.6
September	222.3	237.7	3.2
October	236.0	239.0	4.1
November	251.6	240.7	5.1
December	320.5	242.6	5.8
<b>1996</b>			
January	240.5	244.5	6.2
February	233.5	245.9	6.0
March	241.3	246.8	5.5
April	237.8	247.3	5.0
May	250.3	247.8	4.7
June	230.6	248.1	4.7
July	235.7	248.1	4.7

<sup>1</sup> Survey has been re-designed—see Information Paper (8511.0).

(Source: *Retail Trade, Australia*, ABS catalogue number 8501.0.)

	NSW	Vic.	Qld	SA	WA	Tas.	Aust. <sup>1</sup>
<b>Population</b>							
Estimated resident population, March 1996 ('000) p	6 173.0	4 533.3	3 339.0	1 477.7	1 755.5	<b>473.2</b>	18 238.6
Proportion of Australian population, March 1996 (%) p	33.8	24.9	18.3	8.1	9.6	<b>2.6</b>	100.0
Population growth rate, 12 months to March 1996 (%) p	1.3	0.9	2.6	0.4	1.9	<b>0.0</b>	1.4
<b>Labour Force</b>							
Employment growth, 12 months to August 1996 (trend series) (%)							
Males	0.8	2.1	2.7	- 0.1	0.6	<b>2.6</b>	1.3
Females	0.4	0.4	1.0	2.0	2.9	<b>- 1.8</b>	0.8
Persons	0.6	1.4	1.9	0.8	1.6	<b>0.7</b>	1.1
Unemployment rate (trend series), August 1996 (%)	8.0	8.7	9.4	9.3	7.8	<b>10.6</b>	8.6
Unemployment growth, 12 months to August 1996 (trend series) (%)	5.5	- 1.9	4.8	- 3.7	8.6	<b>14.8</b>	3.4
Participation rate (trend series), August 1996 (%)	62.2	63.3	64.8	62.0	66.5	<b>61.1</b>	63.6
Average weekly overtime worked per employee, May 1996 (hours)	1.2	1.2	1.2	1.1	1.1	<b>0.9</b>	1.1
Job vacancy rate, May 1996 (%)	1.1	0.7	0.6	0.5	0.9	<b>0.5</b>	0.8
Working days lost through industrial disputes, 12 months to June 1996 (days per '000 employees)	140	76	135	61	168	<b>17</b>	114
<b>Wages and Prices</b>							
Average weekly total earnings, full-time adult employees (trend series) May 1996 (\$)							
Males	814.8	765.7	700.8	726.3	810.5	<b>701.1</b>	773.1
Females	632.3	605.4	570.6	568.9	583.6	<b>580.3</b>	605.0
Persons	748.6	712.5	651.2	675.5	729.0	<b>659.5</b>	713.7
Average weekly total earnings, full-time adult employees, growth rate, 12 months to May 1996 (%)	4.4	4.4	1.4	3.7	5.2	<b>3.6</b>	3.9
Consumer price index, all groups, annual growth to June quarter 1996 (%) <sup>2</sup>	3.9	2.6	3.0	2.7	2.6	<b>3.0</b>	3.1
<b>Building</b>							
% change in the number of new residential dwelling units approved in 12 months ended July 1996, over the same period previous year	- 20.6	- 20.8	- 28.9	- 36.9	- 26.1	<b>- 20.4</b>	- 24.8
<b>Finance and Retail Trade</b>							
% change in private new capital expenditure, 12 months ended June 1996, over the same period previous year	8.1	14.9	9.8	- 15.3	12.6	<b>- 8.8</b>	10.2
% change in trend estimates turnover of retail establishments, July 1996 (change from corresponding month of the previous year)	8.3	3.6	4.0	2.4	3.3	<b>4.7</b>	5.2
<b>Transport</b>							
% change in number of new motor vehicles (excluding motorcycles) registered 12 months ended July 1996, over the same period previous year	- 3.9	3.4	0.3	2.8	1.2	<b>- 2.3</b>	- 0.2
<b>Agriculture</b>							
% change in the number of livestock slaughtered 12 months ended July 1996 over the same period previous year							
Cattle and calves	- 3.5	- 0.1	- 11.6	- 9.3	- 0.3	<b>- 5.0</b>	- 5.2
Sheep and lambs	- 13.9	- 11.2	8.4	- 15.2	1.2	<b>- 21.1</b>	- 10.8
<b>Tourism</b>							
Room occupancy rates for hotels, motels etc. with facilities, June quarter 1996 (%)	57.4	53.5	57.6	51.4	56.5	<b>46.7</b>	56.1
<b>Australian National and State Accounts</b>							
% change in GSP (GDP), Average 1989-90 Prices Trend Series							
Mar. qtr 1996 to June. qtr 1996	1.0	0.4	1.7	0.7	2.0	<b>0.1</b>	0.7
June. qtr 1995 to June. qtr 1996	3.5	3.9	5.2	4.7	8.3	<b>2.7</b>	4.2

<sup>1</sup> Australian totals include the ACT and NT.<sup>2</sup> CPI applies to State capitals.

## EXPLANATORY NOTES

### INTRODUCTION

**1** This publication contains latest figures for a comprehensive range of economic indicators. Statistics shown in this publication are the latest available at the date of preparation and may be subject to revision in subsequent issues. In a number of cases figures appearing in this publication are preliminary and are subject to revision in subsequent issues. Reference should therefore always be made to the latest issue or to the statistical publication on the specific subject.

### SEASONAL ADJUSTMENT AND TREND ESTIMATION

**2** Seasonal adjustment is a means of removing the estimated effects of normal seasonal variation from the series so that the effects of other influences on the series can be more clearly recognised. Seasonal adjustment does not aim to remove the irregular or non-seasonal influences which may be present in any particular month. This means that month-to-month movements of the seasonally adjusted estimates may not be reliable indicators of trend behaviour.

**3** The smoothing of seasonally adjusted series reduces the impact of the irregular components of the seasonally adjusted series and creates trend estimates. These trend estimates are derived by applying a 13-term Henderson-weighted moving average to all months except the last six. The last six monthly trend estimates are obtained by applying surrogates of the Henderson average to the seasonally adjusted series. Trend series are used to analyse the underlying behaviour of the series over time.

**4** While this smoothing technique enables estimates to be produced for the latest month, it does result in revisions to the most recent months as additional observations become available. Generally, subsequent revisions become smaller and after 3 months have a negligible impact on the series. Revisions also occur as a result of the annual review of seasonal factors.

**5** Users may wish to refer to the ABS Publication *A Guide to Interpreting Time Series – Monitoring 'Trends' – An Overview* (1348.0) for more detailed information on smoothing seasonally adjusted time series data.

### RELATED PUBLICATIONS

**6** Current publications produced by the ABS are listed in the *Catalogue of Publications and Products* (1101.0). The ABS also issues, on Tuesdays and Fridays, the *Release Advice* (1105.0) which lists publications to be released in the next few days. The *Catalogue* and *Release Advice* are available from any ABS office.

### UNPUBLISHED STATISTICS

**7** As well as the statistics included in this and related publications, the ABS may have other relevant unpublished data available. Inquiries should be made to Information Inquiries on (002) 20 5800 or to any ABS office.

### EFFECTS OF ROUNDING

**8** Some figures have been rounded and discrepancies may occur between totals and sums of the component items.

### SYMBOLS AND OTHER USAGES

n.a.	not available
n.y.a.	not yet available
..	not applicable
—	nil or rounded to zero
p	preliminary—figure or series subject to revision
r	figure or series revised since previous issue



## For more information . . .

The ABS publishes a wide range of statistics and other information on Australia's economic and social conditions. Details of what is available in various publications and other products can be found in the ABS Catalogue of Publications and Products available from all ABS Offices.

### ABS Products and Services

Many standard products are available from ABS bookshops located in each State and Territory. In addition to these products, information tailored to the needs of clients can be obtained on a wide range of media by contacting your nearest ABS Office. The ABS also provides a Subscription Service for standard products and some tailored information services.

### National Dial-a-Statistic Line

0055 86 400

*Steadycom P/L: premium rate 25c/21.4 secs.*

This number gives 24-hour access, 365 days a year, for a range of important economic statistics including the CPI.

### Internet

<http://www.statistics.gov.au>

A wide range of ABS information is available via the Internet, with basic statistics available for each State, Territory and Australia. We also have Key National Indicators, ABS product release details and other information of general interest.

## Sales and Inquiries

Keylink STAT.INFO/ABS  
X.400 (C:Australia,PUB:Telememo,O:ABS,FN:STAT,SN:INFO)  
Internet [stat.info@abs.telememo.au](mailto:stat.info@abs.telememo.au)

National Mail Order Service (06) 252 5249  
Subscription Service 1800 02 0608

	Information Inquiries	Bookshop Sales
SYDNEY	(02) 9268 4611	(02) 9268 4620
MELBOURNE	(03) 9615 7755	(03) 9615 7755
BRISBANE	(07) 3222 6351	(07) 3222 6350
PERTH	(09) 360 5140	(09) 360 5307
ADELAIDE	(08) 8237 7100	(08) 8237 7582
CANBERRA	(06) 252 6627	(06) 207 0326
HOBART	(03) 6220 5800	(03) 6220 5800
DARWIN	(08) 8943 2111	(08) 8943 2111



Client Services, ABS, PO Box 10, Belconnen ACT 2616

Produced by the Australian Government Publishing Service  
© Commonwealth of Australia 1996



2130360010963

ISSN 1034-1803

Recommended retail price: \$16.50